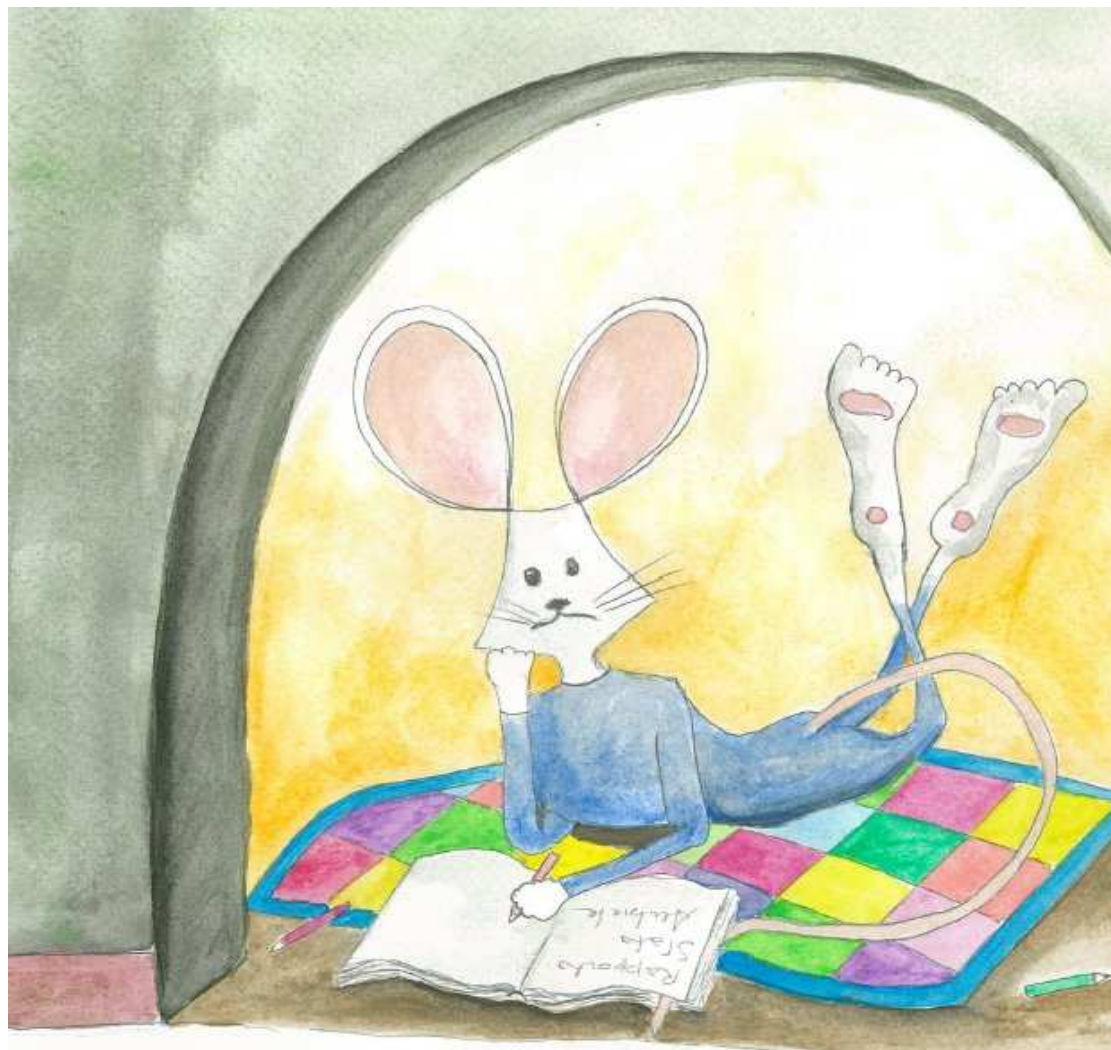


LINO AND THE FINE PARTICLES

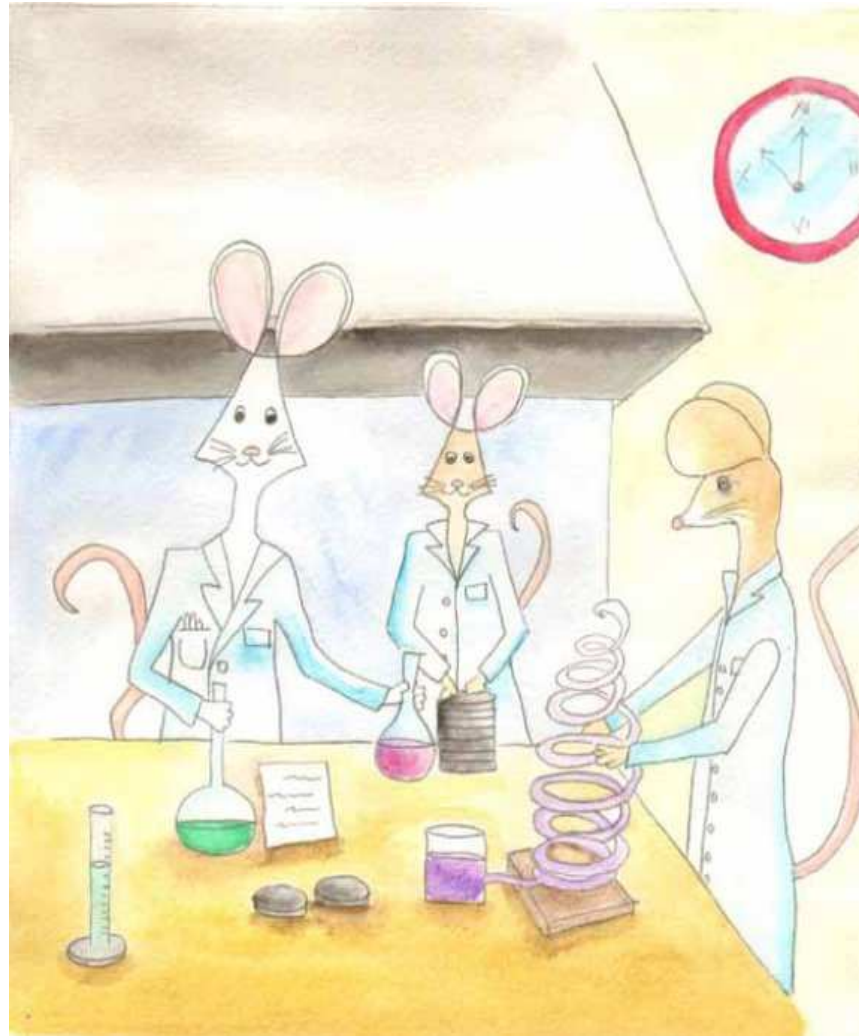


HELLO CHILDREN,
MY NAME IS LINO AND I
LIVE IN THE LABORATORY
OF THE **REGIONAL**
ENVIRONMENTAL
PROTECTION AGENCY.

IT IS A VERY
INTERESTING PLACE
WHERE YOU CAN DO
AND LEARN A LOT OF
CURIOUS AND USEFUL
THINGS I WANT TO TELL
YOU ABOUT RIGHT NOW.

IN THE LAB WHERE I
LIVE, AMONG THE MANY
OTHER THINGS, THE AIR
QUALITY IS STUDIED
TOO.

TAKE A DEEP BREATH.....



OK, NOW TAKE ANOTHER
ONE.....

WELL, IN MY LAB WE
ATTEMPT TO DISCOVER
WHETHER THE AIR YOU
HAVE BREATHED IS
CLEAN OR WHETHER
THERE ARE ALSO
SUBSTANCES WHICH ARE
NOT GOOD FOR HEALTH.

IN FACT EVEN IN THE
AIR, AS IN WATER, IN
FOODS AND IN THE
GROUND **POLLUTANTS**
CAN BE FOUND AND
SOMETIMES THEY ARE
NOT HEALTHY.

BUT WHILE I CAN LIVE ONE HOUR WITHOUT DRINKING, A WHOLE DAY WITHOUT EATING, AND EVEN A WHOLE WEEK WITHOUT PLAYING OUTDOOR, I CANNOT LIVE WITHOUT BREATHING **EVEN A MINUTE.**

BECAUSE OF THAT, IT'S VERY IMPORTANT THE AIR IS ALWAYS CLEAN AND IF IT IS NOT WE, MICE OF THE LABORATORY, ATTEMPT TO UNDERSTAND WHY IT IS DIRTY AS SOON AS POSSIBLE.



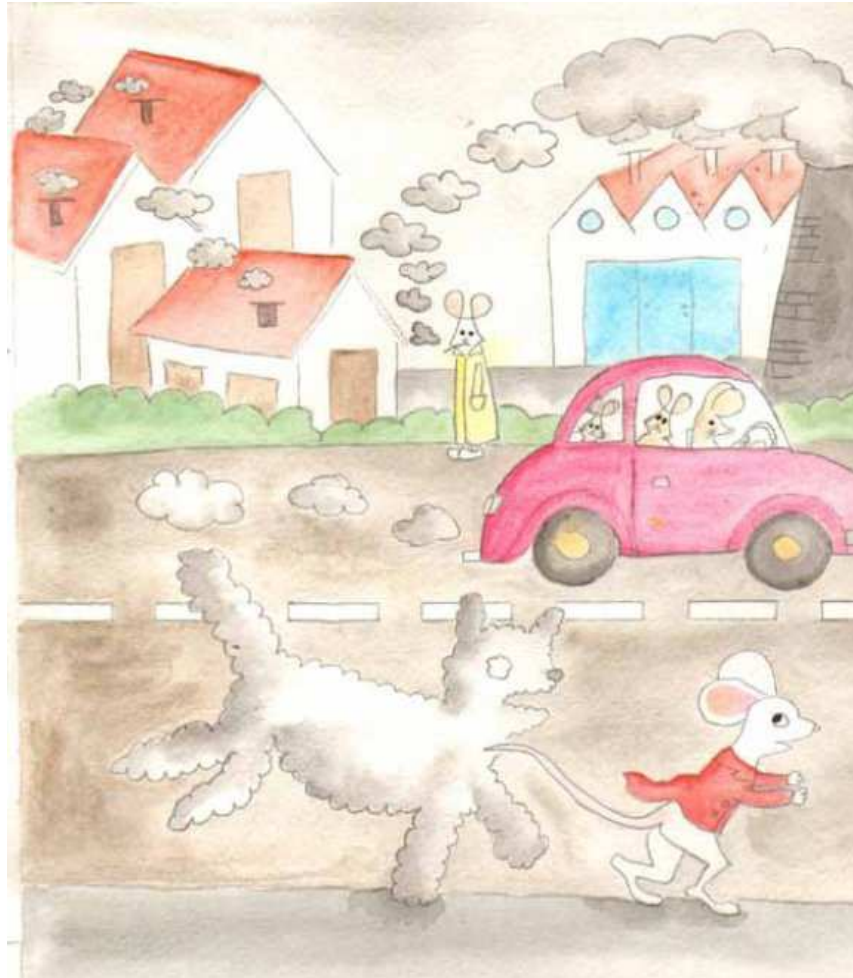
AMONG THE SUBSTANCES THAT DIRTY AIR THERE ARE THOSE NAMED

DUST.

IT IS NOT THE DUST WE FIND ON THE TABLE OR ON THE BEDSIDE AFTER ONE WEEK WITHOUT CLEANING, OR THAT ON THE TOYS THAT WE DON'T LIKE.

ACTUALLY, THE DUST POLLUTING THE AIR IS MUCH SMALLER THAN THE DUST WE SEE ON THE FURNITURE, **EVEN SMALLER** TO GET IN OUR LUNGS..

ANAYWAY, DON'T WORRY NOT ALL THE DUST IS DANGEROUS, A FEW OF IT IS NEEDED IN THE ATMOSPHERE, OTHERWISE **CLOUDS AND RAIN** WOULD NOT FORM.



WHEN THE DUST IS A LOT, OR EVEN WORSE IT IS HARMFUL, JUST IN THAT MOMENT IT'S IMPORTANT **RUN FOR SHELTER!**

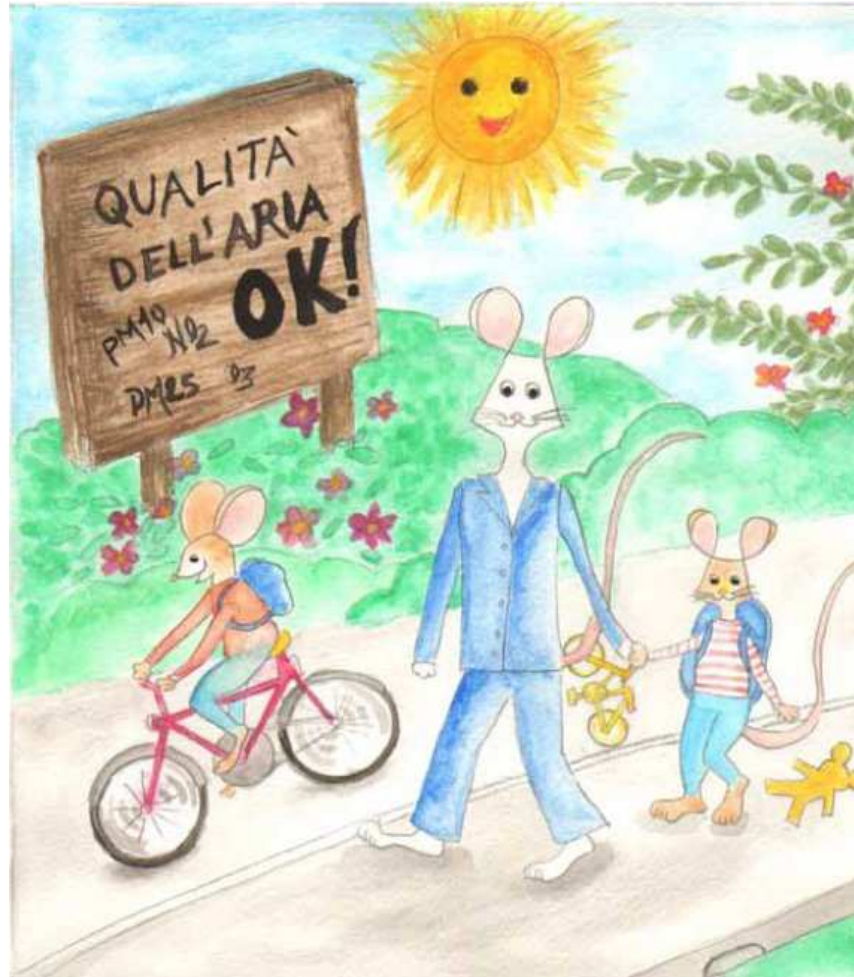
SOME OF THE DUST MAY COME OUT FROM THE EXHAUST GAS OF CARS.

.... IN OTHER CASES FROM INDUSTRY OR STOVES AND FIREPLACES OF THE HOUSING..

THEN, WHAT CAN WE DO?

WELL, FIRST OF ALL WE HAVE TO SEE WHERE WE LIVE WHETHER THE AIR IS CLEAN OR IT IS NOT AND ALWAYS LOOK AT THE **AIR QUALITY FORECASTS** AS WE DO FOR THE WEATHER..

THEN, IF THE AIR IS NOT CLEAN OR IT WILL NOT BE, WE SHOULD ATTEMPT TO **DECREASE** THE DUST EMITTED BY INDUSTRIAL ACTIVITY AND, IF IT IS POSSIBLE, WE SHOULD AVOID TO USE THE CAR, ESPECIALLY IF IT'S AN OLD ONE ...



.. **LET'S GO ON FOOT OR BY BICYCLE.**

I DO NOT KNOW YOUR THOUGHT ON THAT, BUT WALKING I CAN ALWAYS KEEP DAD'S HAND, MOTHER'S OR GRANDPARENTS'; WHILE IN BIKE..., WELL, WOULD YOU COMPARE YOUR BIKE WITH THE CAR!?

ANOTHER THING THAT I LEARNED IN THE ARPA LABORATORY IS THAT THE AIR QUALITY CONCERNS EVERYONE, AS EVERYONE BREATH, BUT MOSTLY BECAUSE EVERYONE POLLUTE A LITTLE.



SITOGRAPHY:

- ❖ **UNITED STATES ENVIRONMENTAL PROTECTION AGENCY: PARTICULATE MATTER (PM) STANDARDS**
http://www.epa.gov/ttn/naaqs/standards/pm/s_pm_index.html
- ❖ **EUROPEAN ENVIRONMENT AGENCY: PARTICULATE MATTER**
http://glossary.eea.europa.eu/terminology/concept_html?term=particulate%20matter
- ❖ **WIKIPEDIA: PARTICULATE MATTER**
http://en.wikipedia.org/wiki/Atmospheric_particulate_matter
- ❖ **EUROPA: KINDER-CORNER**
http://europa.eu/kids-corner/index_de.htm
- ❖ **GENERAL INFORMATION:**
crma@arpa.fvg.it
- ❖ **FORECASTS OF AIR QUALITY IN THE SITE "ARPA FVG - AIR":**
<http://cmsarpa.regione.fvg.it/cms/tema/aria/risposte/previsioni.html>

Copyright © ARPA FVG, Luglio 2013
This work is released under the terms of the license
Creative Commons Attribution NonCommercial / ShareAlike.
Information on how to request permission may be found at: crma@arpa.fvg.it



Realizzato da:
CRMA
Centro Regionale di
Modellistica Ambientale



Disegni: Francesca Geatti